

## Product datasheet for **TA807372**

### **PDX1 Mouse Monoclonal Antibody [Clone ID: OT13H3]**

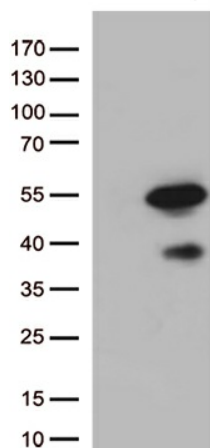
#### **Product data:**

<b>Product Type:</b>	Primary Antibodies
<b>Clone Name:</b>	OT13H3
<b>Applications:</b>	IHC, WB
<b>Recommend Dilution:</b>	IHC 1:150
<b>Reactivity:</b>	Human
<b>Host:</b>	Mouse
<b>Isotype:</b>	IgG2a
<b>Clonality:</b>	Monoclonal
<b>Immunogen:</b>	Full length human recombinant protein of human PDX1 (NP_000200) produced in E.coli.
<b>Formulation:</b>	PBS (PH 7.3) containing 1% BSA, 50% glycerol and 0.02% sodium azide.
<b>Concentration:</b>	1 mg/ml
<b>Purification:</b>	Purified from mouse ascites fluids or tissue culture supernatant by affinity chromatography (protein A/G)
<b>Predicted Protein Size:</b>	30.6 kDa
<b>Gene Name:</b>	pancreatic and duodenal homeobox 1
<b>Database Link:</b>	<a href="#">NP_000200</a> <a href="#">Entrez Gene 3651</a> <a href="#">Human</a>
<b>Background:</b>	The protein encoded by this gene is a transcriptional activator of several genes, including insulin, somatostatin, glucokinase, islet amyloid polypeptide, and glucose transporter type 2. The encoded nuclear protein is involved in the early development of the pancreas and plays a major role in glucose-dependent regulation of insulin gene expression. Defects in this gene are a cause of pancreatic agenesis, which can lead to early-onset insulin-dependent diabetes mellitus (NIDDM), as well as maturity onset diabetes of the young type 4 (MODY4). [provided by RefSeq, Jul 2008]
<b>Synonyms:</b>	GSF; IDX-1; IPF1; IUF1; MODY4; PAGEN1; PDX-1; STF-1
<b>Protein Families:</b>	Embryonic stem cells, ES Cell Differentiation/IPS, Induced pluripotent stem cells, Transcription Factors
<b>Protein Pathways:</b>	Maturity onset diabetes of the young, Type II diabetes mellitus

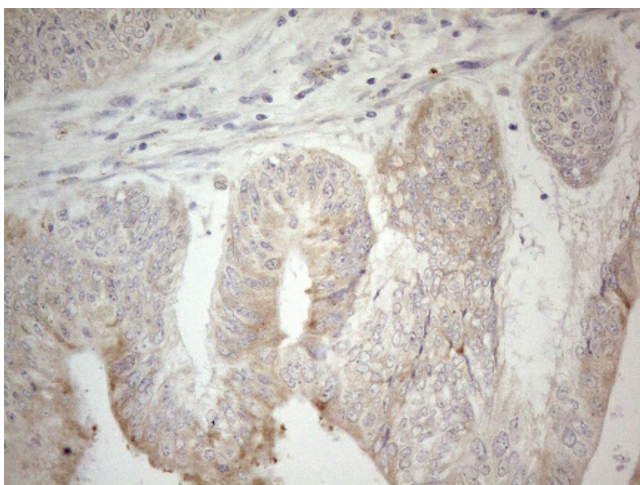


[View online »](#)

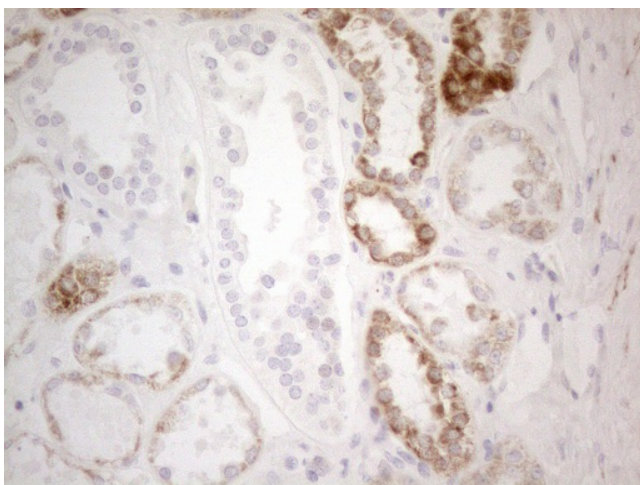
## Product images:



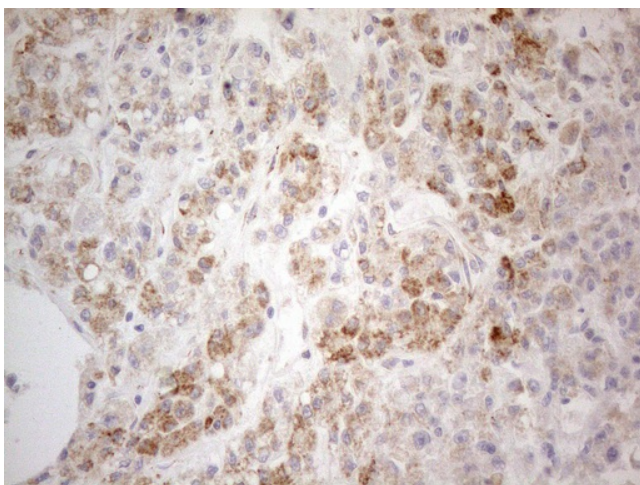
HEK293T cells were transfected with the pCMV6-ENTRY control (Left lane) or pCMV6-ENTRY PDX1 ([RC222354], Right lane) cDNA for 48 hrs and lysed. Equivalent amounts of cell lysates (5 ug per lane) were separated by SDS-PAGE and immunoblotted with anti-PDX1 (1:500).



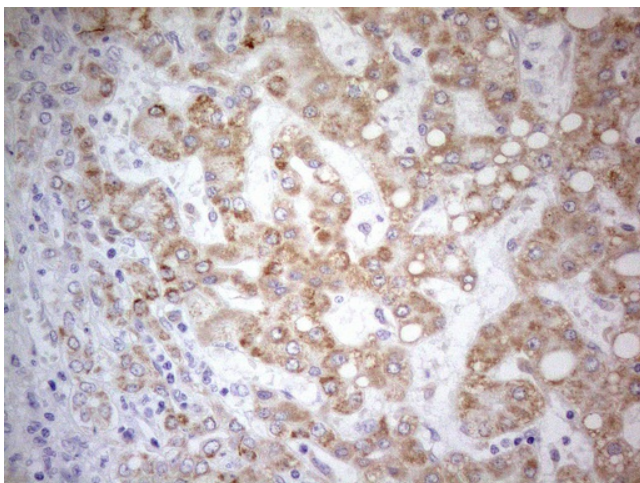
Immunohistochemical staining of paraffin-embedded Adenocarcinoma of Human colon tissue using anti-PDX1 mouse monoclonal antibody. (Heat-induced epitope retrieval by 1mM EDTA in 10mM Tris buffer (pH8.5) at 120°C for 3min, TA807372) (1:150)



Immunohistochemical staining of paraffin-embedded Human Kidney tissue using anti-PDX1 mouse monoclonal antibody. (Heat-induced epitope retrieval by 1mM EDTA in 10mM Tris buffer (pH8.5) at 120°C for 3min, TA807372) (1:150)

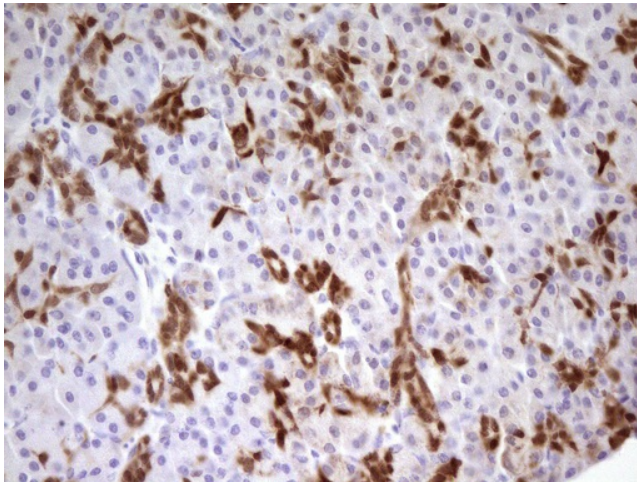


Immunohistochemical staining of paraffin-embedded Human liver tissue using anti-PDX1 mouse monoclonal antibody. (Heat-induced epitope retrieval by 1mM EDTA in 10mM Tris buffer (pH8.5) at 120°C for 3min, TA807372) (1:150)

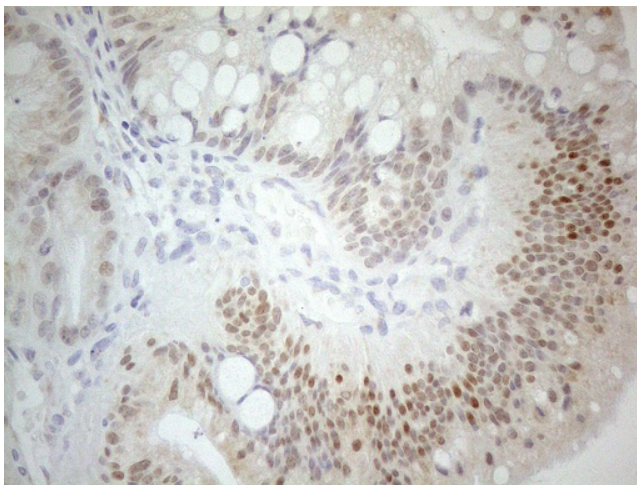


Immunohistochemical staining of paraffin-embedded Carcinoma of Human liver tissue using anti-PDX1 mouse monoclonal antibody. (Heat-induced epitope retrieval by 1mM EDTA in 10mM Tris buffer (pH8.5) at 120°C for 3min, TA807372) (1:150)

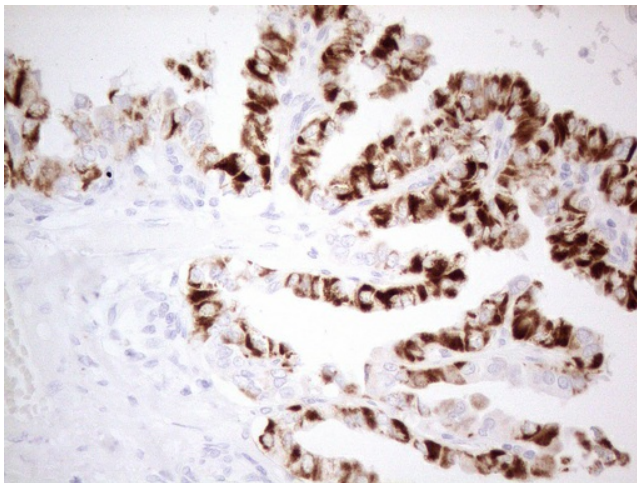




Immunohistochemical staining of paraffin-embedded Human pancreas tissue using anti-PDX1 mouse monoclonal antibody. (Heat-induced epitope retrieval by Tris-EDTA, pH8.0, TA807372) (1:150)



Immunohistochemical staining of paraffin-embedded Carcinoma of Human pancreas tissue using anti-PDX1 mouse monoclonal antibody. (Heat-induced epitope retrieval by 1mM EDTA in 10mM Tris buffer (pH8.5) at 120°C for 3min, TA807372) (1:150)



Immunohistochemical staining of paraffin-embedded Carcinoma of Human thyroid tissue using anti-PDX1 mouse monoclonal antibody. (Heat-induced epitope retrieval by 1mM EDTA in 10mM Tris buffer (pH8.5) at 120°C for 3min, TA807372) (1:150)