

Product datasheet for TA503664

Calpain 9 (CAPN9) Mouse Monoclonal Antibody [Clone ID: OTI3G10]

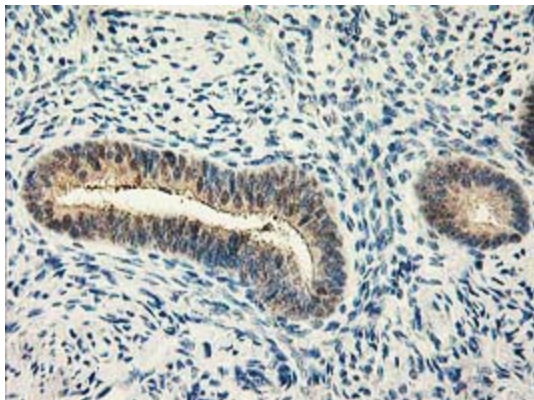
Product data:

Product Type:	Primary Antibodies
Clone Name:	OTI3G10
Applications:	IHC, WB
Recommend Dilution:	WB 1:500~2000, IHC 1:150
Reactivity:	Human, Monkey, Rat, Dog
Host:	Mouse
Isotype:	IgG2b
Clonality:	Monoclonal
Immunogen:	Full length human recombinant protein of human CAPN9(NP_006606) produced in HEK293T cell.
Formulation:	PBS (PH 7.3) containing 1% BSA, 50% glycerol and 0.02% sodium azide.
Concentration:	0.8 mg/ml
Purification:	Purified from mouse ascites fluids or tissue culture supernatant by affinity chromatography (protein A/G)
Predicted Protein Size:	78.9 kDa
Gene Name:	calpain 9
Database Link:	NP_006606 Entrez Gene 116694 RatEntrez Gene 608044 DogEntrez Gene 719222 MonkeyEntrez Gene 10753 Human
Background:	Calpains are ubiquitous, well-conserved family of calcium-dependent, cysteine proteases. The calpain proteins are heterodimers consisting of an invariant small subunit and variable large subunits. The large subunit possesses a cysteine protease domain, and both subunits possess calcium-binding domains. Calpains have been implicated in neurodegenerative processes, as their activation can be triggered by calcium influx and oxidative stress. The protein encoded by this gene is expressed predominantly in stomach and small intestine and may have specialized functions in the digestive tract. This gene is thought to be associated with gastric cancer. Multiple alternatively spliced transcript variants encoding different isoforms have been found for this gene. [provided by RefSeq]
Synonyms:	GC36; nCL-4

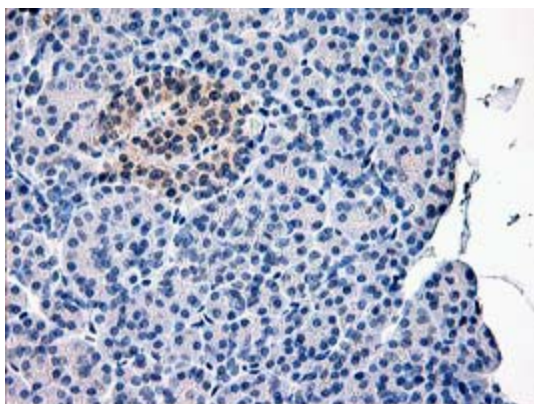
[View online »](#)

Protein Families: Druggable Genome, Protease

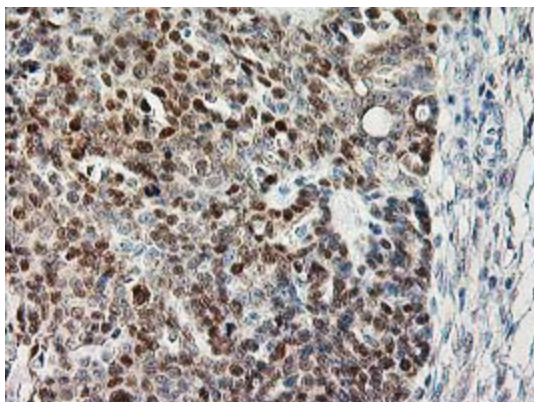
Product images:



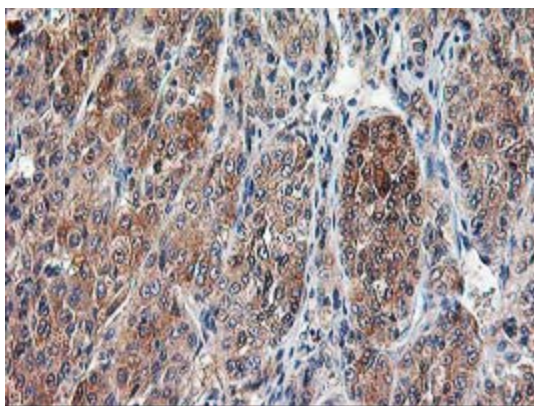
Immunohistochemical staining of paraffin-embedded Human endometrium tissue within the normal limits using anti-CAPN9 mouse monoclonal antibody. (Heat-induced epitope retrieval by 10mM citric buffer, pH6.0, 100°C for 10min, TA503664)



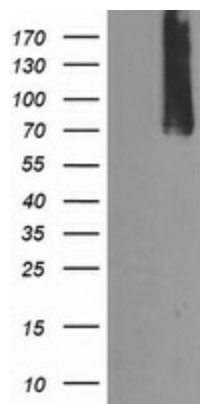
Immunohistochemical staining of paraffin-embedded Human pancreas tissue within the normal limits using anti-CAPN9 mouse monoclonal antibody. (Heat-induced epitope retrieval by 10mM citric buffer, pH6.0, 100°C for 10min, TA503664)



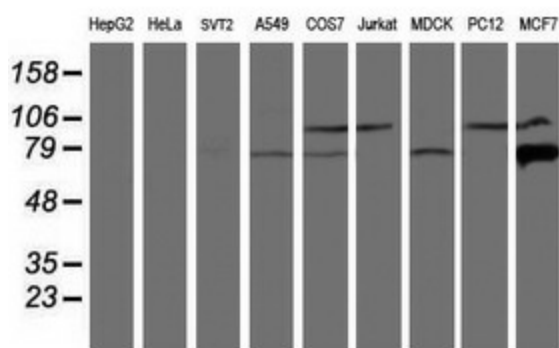
Immunohistochemical staining of paraffin-embedded Adenocarcinoma of Human ovary tissue using anti-CAPN9 mouse monoclonal antibody. (Heat-induced epitope retrieval by 10mM citric buffer, pH6.0, 100°C for 10min, TA503664)



Immunohistochemical staining of paraffin-embedded Carcinoma of Human liver tissue using anti-CAPN9 mouse monoclonal antibody. (Heat-induced epitope retrieval by 10mM citric buffer, pH6.0, 100°C for 10min, TA503664)



HEK293T cells were transfected with the pCMV6-ENTRY control (Left lane) or pCMV6-ENTRY CAPN9 [RC215171], Right lane) cDNA for 48 hrs and lysed. Equivalent amounts of cell lysates (5 ug per lane) were separated by SDS-PAGE and immunoblotted with anti-CAPN9. Positive lysates [LY401979] (100ug) and [LC401979] (20ug) can be purchased separately from OriGene.



Western blot analysis of extracts (35ug) from 9 different cell lines by using anti-CAPN9 monoclonal antibody.