

Product datasheet for **TA336971**

ROR gamma (RORC) Mouse Monoclonal Antibody [Clone ID: 4G419]

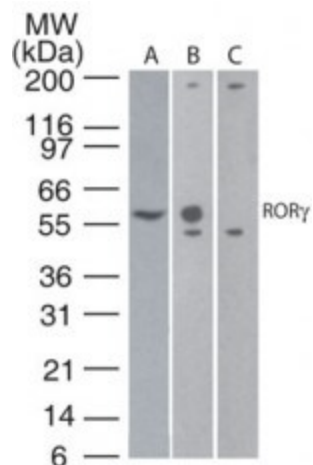
Product data:

| | |
|---------------------|---|
| Product Type: | Primary Antibodies |
| Clone Name: | 4G419 |
| Applications: | FC, WB |
| Recommend Dilution: | WB: 5 ug/ml, FC: 0.25-0.5 ug/10 ⁶ cells |
| Reactivity: | Human, Mouse, Primate |
| Host: | Mouse |
| Isotype: | IgG1, kappa |
| Clonality: | Monoclonal |
| Immunogen: | A portion of amino acids 1-50 of human ROR gamma was used as the immunogen. |
| Formulation: | PBS, 0.05% sodium Azide. Store at 4C short term. Aliquot and store at -20C long term. Avoid freeze-thaw cycles. |
| Concentration: | 0.5 mg/ml |
| Purification: | Affinity purified |
| Gene Name: | RAR related orphan receptor C |
| Database Link: | NP_005051 Entrez Gene 19885 Mouse Entrez Gene 6097 Human |
| Synonyms: | NR1F3; RORG; RZR-GAMMA; RZRG; TOR |
| Protein Families: | Druggable Genome, Transcription Factors |

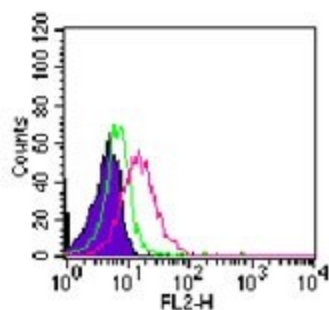


[View online »](#)

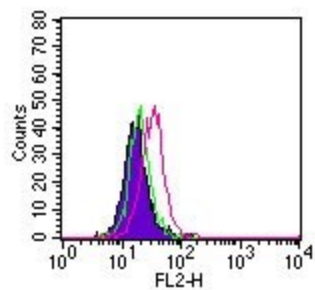
Product images:



Western Blot: ROR gamma Antibody (4G419) TA336971 - Analysis in A) human thymus lysate, B) transfected 293 cell lysate, and C) untransfected 293 cell lysate. Dilution: 5 ug/ml.



Flow Cytometry: ROR gamma Antibody (4G419) TA336971 - Intracellular analysis of ROR gamma in human lymphocytes using 0.25 ug of this antibody. Shaded histogram represents cells without antibody; green represents isotype control antibody ; red represents



Flow Cytometry: ROR gamma Antibody (4G419) TA336971 - Intracellular flow cytometric analysis of ROR gamma in human monocytes using 0.25 ug of ROR gamma antibody. Shaded histogram represents cells without antibody; green represents isotype control antibo