

## Product datasheet for TA336372

### IKB alpha (NFKBIA) Mouse Monoclonal Antibody [Clone ID: 6A920]

#### Product data:

Product Type:	Primary Antibodies
Clone Name:	6A920
Applications:	FC, IHC, WB
Recommend Dilution:	WB: 1-2 ug/ml, FC: 0.25-1 ug/10 <sup>6</sup> cells, IF: 1:10-1:500, IHC: 1:10-1:500, IHC-P: 1:50, IP: 1 ug/ml
Reactivity:	Human, Mouse, Rat
Host:	Mouse
Isotype:	IgG1, kappa
Clonality:	Monoclonal
Immunogen:	A recombinant protein corresponding to amino acid residues 32-291 of human IκBa was used as immunogen.
Formulation:	PBS containing 0.05% BSA, 0.05% Sodium Azide. Store at 4C short term. Aliquot and store at -20C long term. Avoid freeze-thaw cycles.
Concentration:	0.5 mg/ml
Purification:	Protein G purified
Gene Name:	NFKB inhibitor alpha
Database Link:	<a href="#">NP_065390</a> <a href="#">Entrez Gene 18035</a> <a href="#">MouseEntrez Gene 25493</a> <a href="#">RatEntrez Gene 4792</a> <a href="#">Human</a>
Background:	NF-κB is silenced in the cytoplasm by an inhibitory protein, IκB (1). Synthesis of IκBa is autoregulated (2). IκB proteins are phosphorylated by IκB kinase complex consisting of at least three proteins, IKK1/α, IKK2/β, and IKK3/γ (3-6). External stimuli such as tumor necrosis factor or other cytokines results in phosphorylation and degradation of IκB releasing NF-κB dimers. NF-κB dimer subsequently translocates to the nucleus and activates target genes. Six members of IκB family members have been identified (1). One of the first gene induced following NF-κB activation is IκBa.
Synonyms:	IKBA; MAD-3; NFKBI
Protein Families:	Druggable Genome

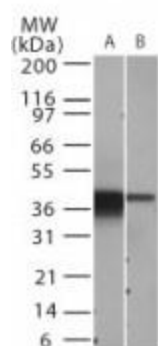


[View online »](#)

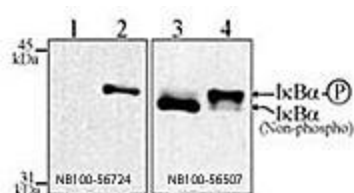
**Protein Pathways:**

Adipocytokine signaling pathway, Apoptosis, B cell receptor signaling pathway, Chemokine signaling pathway, Chronic myeloid leukemia, Cytosolic DNA-sensing pathway, Epithelial cell signaling in Helicobacter pylori infection, Neurotrophin signaling pathway, NOD-like receptor signaling pathway, Pathways in cancer, Prostate cancer, RIG-I-like receptor signaling pathway, Small cell lung cancer, T cell receptor signaling pathway, Toll-like receptor signaling pathway

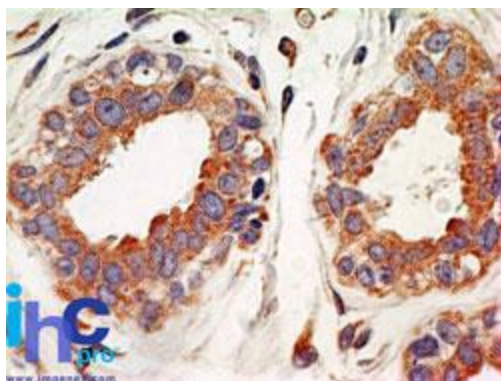
**Product images:**



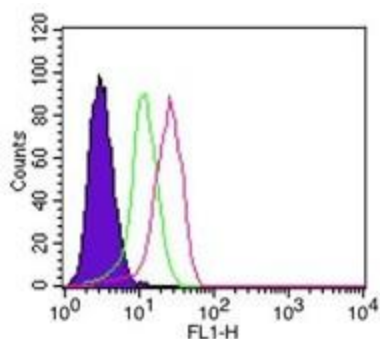
Western Blot: IKB alpha Antibody (6A920)  
TA336372 - IKB alpha Antibody (6A920) TA336372  
- Western blot analysis of IκBα using TA336372 at 2 ug/ml in (A) Daudi and (B) NIH 3T3 whole cell lysate.



Western Blot: IKB alpha Antibody (6A920)  
TA336372 - Western Blot: IKB alpha Antibody (6A920) TA336372 - Jurkat cells were treated for 30 min with 100 ug/ml ALLN (N-Acetyl-Leu-Leu-Norleucinal; a Calpain inhibitor and also proteasome inhibitor that prev



Immunohistochemistry-Paraffin: IKB alpha Antibody (6A920) TA336372 - Formalin-fixed, paraffin-embedded human breast probed with IκBα antibody at 5 ug/ml. Human tissue TMA was used for this test. Staining of formalin-fixed tissues is enhanced by boiling t



Flow Cytometry: IkB alpha Antibody (6A920) TA336372 - Intracellular staining of  $10^6$  ThP-1 cells using 0.25 ug of TA336372. Shaded histogram represents cells alone, green represents the isotype control, and red represents the IkBa antibody. Novus's intr